



PORTSIDE

FERRY WHARF

A HOLDER PROPERTIES DEVELOPMENT



**PORTSIDE**  
FERRY WHARF

# OFFICE SPACE FOR LEASE

MOUNT PLEASANT, SC



## WATERFRONT OFFICE SPACE

[www.portsideferrywharf.com](http://www.portsideferrywharf.com)



- A five-story, 120,000 square foot Class “A” office building
- Situated along the Charleston Harbor at the base of the Arthur Ravenel Jr. Bridge
- Offers spectacular views of the Charleston Harbor and downtown Charleston
- Highly efficient 25,000 square foot typical floor plates
- Located in Ferry Wharf master-planned community, a new luxury development that will feature a mix of office, retail, hospitality and residential.
- Parking available in adjacent parking deck (3 per 1,000 RSF)

### FULL-SERVICE RENTAL RATE

- \$38.50 per rentable square foot

### FOR MORE INFORMATION PLEASE CONTACT:

**FRIEND GRAY**  
843.745.7160  
[fgray@holderproperties.com](mailto:fgray@holderproperties.com)

**BILLY COOKE**  
843.608.1745  
[bcooke@holderproperties.com](mailto:bcooke@holderproperties.com)







**PORTSIDE**  
FERRY WHARF

# LOCATION





**PORTSIDE**  
FERRY WHARF

# SITE PLAN

CHARLESTON  
HARBOR

BEACHWALK

  
**PORTSIDE**  
FERRY WHARF  
**OFFICE BUILDING**

**PARKING DECK**

**HOTEL**





PORTSIDE  
FERRY WHARF

VIEW





**PORTSIDE**  
FERRY WHARF

**LOBBY**





**PORTSIDE**  
FERRY WHARF

# SURROUNDINGS







PORTSIDE  
FERRY WHARF

HARBOR VIEW

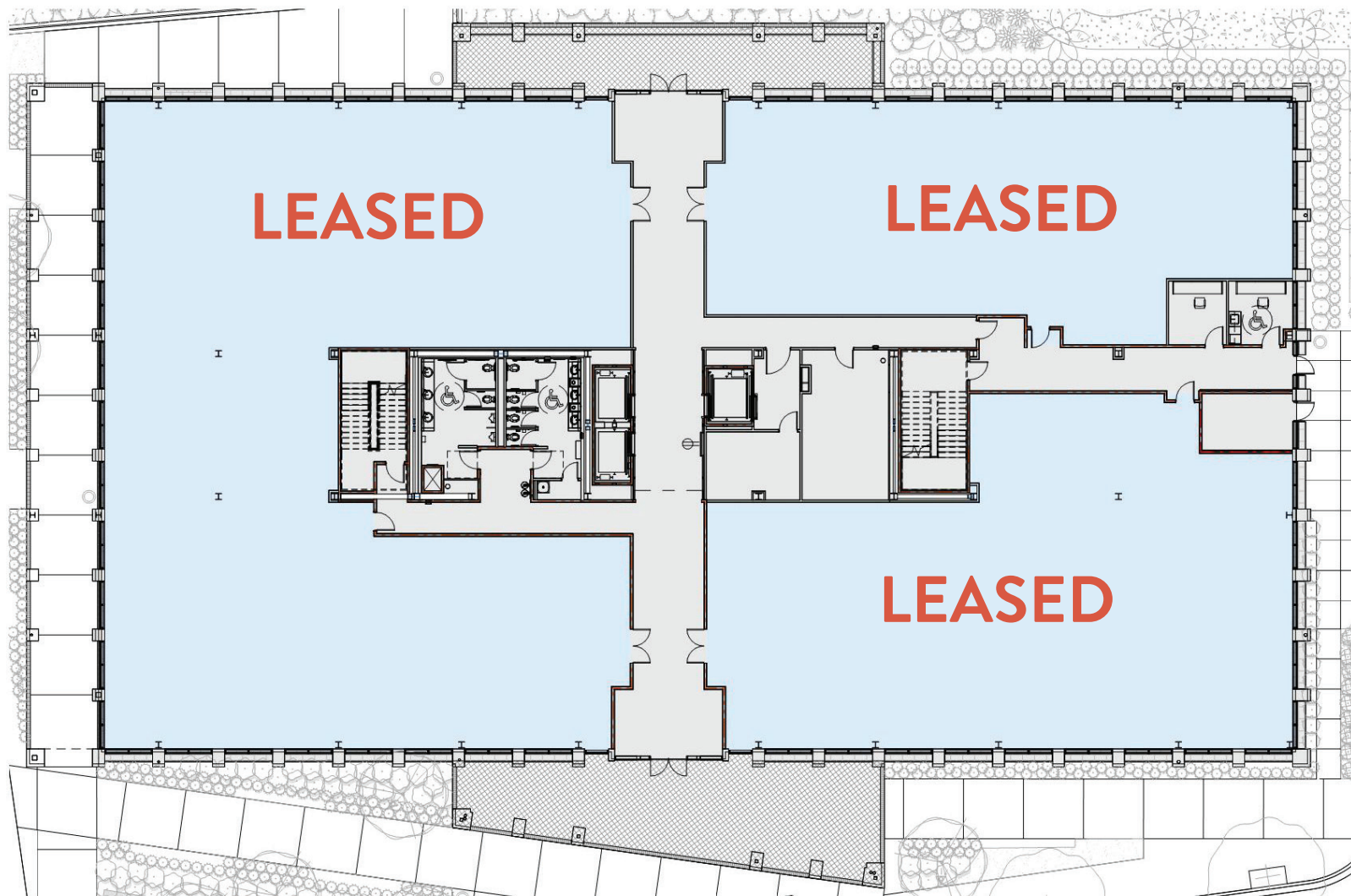




**PORTSIDE**  
FERRY WHARF

FLOOR ONE

# AVAILABLE SPACE





# AVAILABLE SPACE





# AVAILABLE SPACE





**PORTSIDE**  
FERRY WHARF

FLOOR FOUR

# AVAILABLE SPACE





# AVAILABLE SPACE

